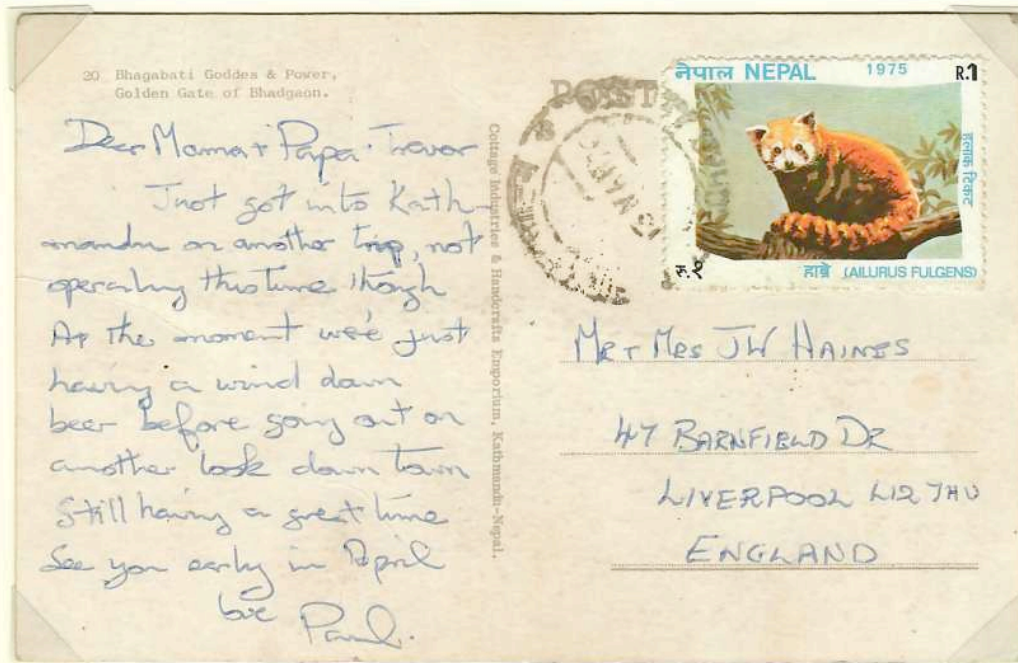


# I Am a Red Panda

**Scope and Purpose:** This exhibit displays the life and conservation of red pandas using stamps, covers, other philatelic material, and some ephemera, preferably from range countries (Bhutan, Nepal, India, Burma/Myanmar, and China) and countries with a conservation interest, including zoos and conservation organizations.

**Introduction:** I want to introduce you to my life as an endangered animal that people don't know much about and to help you learn and understand what my daily life and challenges are like in the mountains of Asia. By the end of this exhibit, you will also know what I am like, what I eat, how I survive, and how you can help my red panda relatives.



Nepal  
To England Mar 13, 1976  
1 R international rate



## Plan

1. Who Am I?
2. What Am I Like?
3. What Do I Eat?
4. How Do I Spend My Day?
5. What Is Different About Me?
6. How Did I Grow Up?
7. Who Am I Afraid Of?
8. Where Do I Live in the Wild?
9. What Is Happening to Me in the Wild?
10. Where Can You See Me?
11. How Can You Help Me?



When you see this red panda symbol, it designates a range country item  
*Italics indicate postal information*

## Synopsis

### I Am a Red Panda

This exhibit is appropriate for a one frame treatment, as the topic is small and there is a relatively limited number of appropriate stamps. The main focus is on stamps issued by the five “range countries” (where the animal lives in the wild): Bhutan, Burma, China (PRC), India, and Nepal. Bhutan, while known for some inappropriate stamp issues, is a range country, so Red Panda stamps are appropriate. A secondary focus is on stamps from non-range countries with a conservation message or from non-range countries where red pandas are kept in captivity.

The title page shows a Nepalese post card bearing a red panda stamp from 1975, which is a normal postal usage from Nepal to England.

Another particularly interesting cover is that showing a map of Nepal on a Nepalese stamp sent from an expedition to the Himalayas (where red pandas live) in 1972 to the Archive for Himalayan Research in Germany.

Note that a little red panda cartoon  is used to denote material from range countries.

Postal information (rates, etc.) is given in italics.

A main purpose of the exhibit is to encourage conservation of this species by learning more about it, through the use of stamps and other philatelic items (and some ephemera) to tell the story of this interesting but lesser known species.

## References

March, L. *Red Pandas*; National Geographic Society: Washington, DC, 2015.

Gregory, J. *Red Pandas (Nature's Children)*; Children's Press: Danbury, CT, 2016.

Badola, S.; Fernandes, M.; Marak, S. R.; Pilia, C. Assessment of illegal trade-related threats to Red Panda in India and selected neighbouring range countries; *Traffic Report*; 2020. <https://www.traffic.org/site/assets/files/12667/red-panda-report-2020.pdf>

Wikipedia article: Red Panda [https://en.wikipedia.org/wiki/Red\\_panda](https://en.wikipedia.org/wiki/Red_panda)

Red Panda Network <https://redpandanetwork.org/>